



OPENING DETECTOR

Wireless contact to protect doors and swing-up windows. The sensor is compatible with Gemini alarm systems equipped with a radio receiver. Refer to the alarm system instruction manual to associate the sensor.

⚠ ATTENTION

The opening detector might not be compatible with older alarm models.

INSTALLATION AND OPERATION

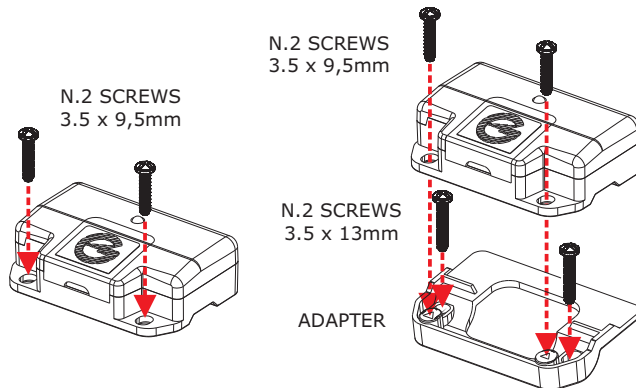
⚠ ATTENTION

Carefully drill holes to prevent damage to the shades and other window coverings.

The opening detector must be tightly fitted to the fixed part of the door or window frame using the supplied screws.

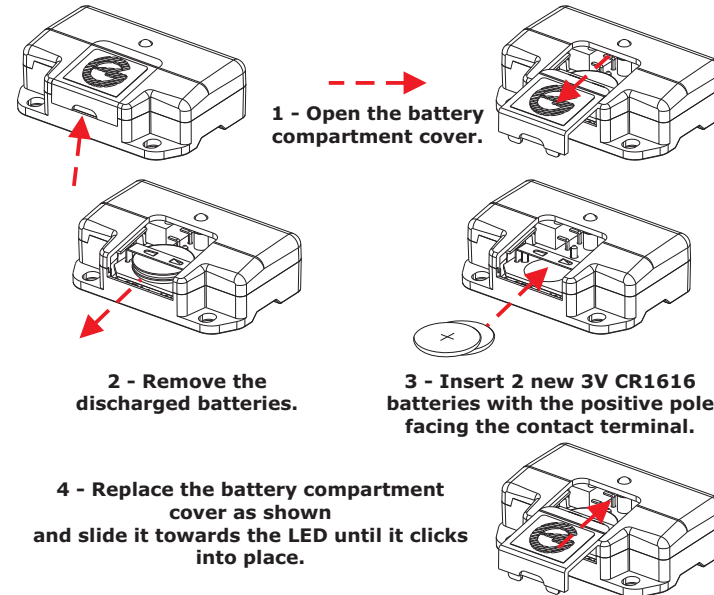
The sensor button must be in close contact with the mobile part to detect any movement of the window or door.

Once installed, open the window or door to make sure the sensor operates properly. The LED must light up to confirm transmission of the alarm signal. If the LED does not turn ON, check the sensor position to make sure the button is in close contact with the mobile part. Use the supplied adaptor if necessary.



BATTERY REPLACEMENT

To check the batteries charge status, press and release the sensor button: the battery is fully charged if the LED turns ON steady. If the LED light is weak or doesn't turn ON, replace the batteries as follows:



⚠ ATTENTION

Risk of explosion if batteries are replaced by an incorrect type.
Use only CR1616 batteries.
Discard used batteries properly in special dedicated containers.

WASTE ELECTRICAL AND ELECTRONIC EQUIPMENT (WEEE) DIRECTIVE

The present device does not fall within the scope of Directive 2002/96/EC on Waste Electrical and Electronic Equipment (WEEE) as specified in art. 2.1 of L.D. no. 151 of 25/07/2005.